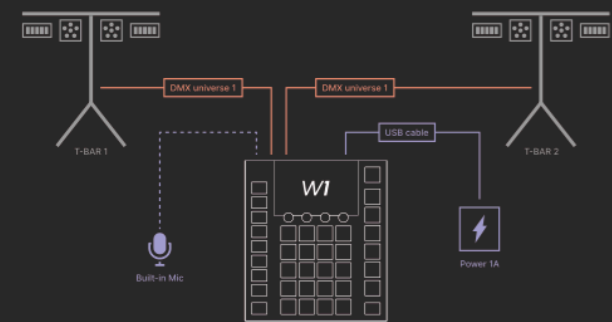


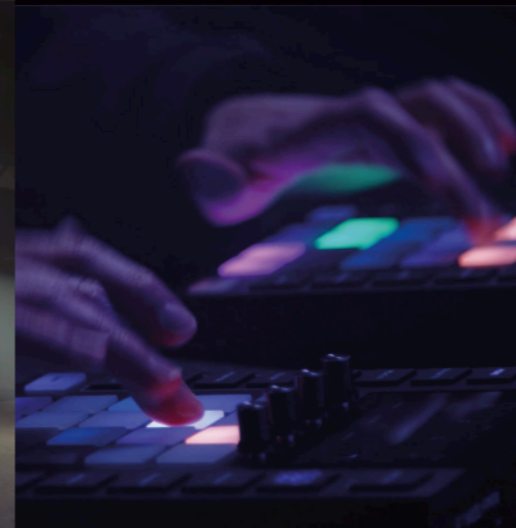
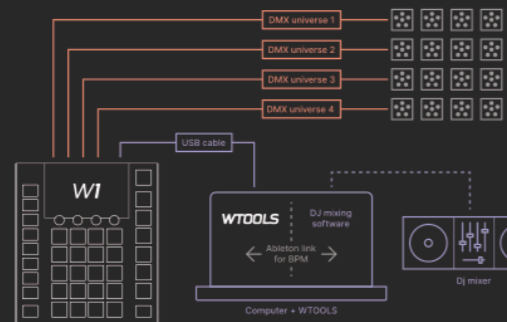
### Mobile Disco

Quick connectivity & the splitter functionality



### Large Disco

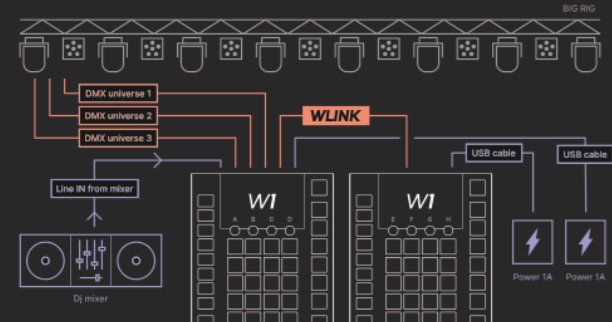
Lots of DMX channels & Ableton Link BPM sync



# W1

### Club

Line in & extended mode with WLINK



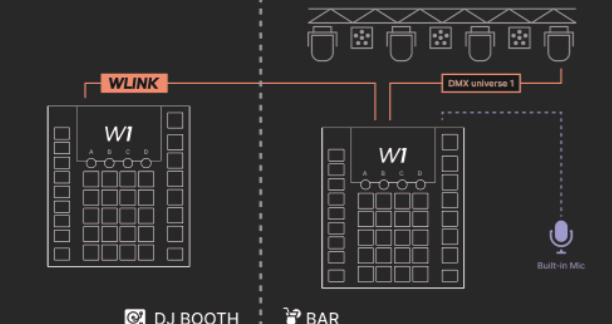
### Live show

DMX IN with faders, MIDI console, single channel fixtures



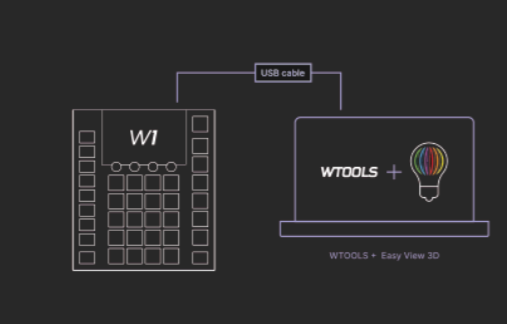
### Bar

2 Wolfmix controllers working in tandem with WLINK



### At home

Setting up at home with the offline 3D visualizer



**NOG** WOLFMIX is a brand of Nicolaudie Group.

**WOLFMIX W1**

**WOLFMIX**

# Wolfmix W1

Standalone performance DMX lighting controller - designed for creating light shows on the fly **without a computer**

A toolbox of FX modules, music sync, and up to 4 DMX universes - packed inside robust hardware with a powerful processor. Choose from 1000's of light fixtures, or build your own directly inside the controller. Whether it's for a live performance, disco, club or show - Wolfmix has you covered.



## Up to 4 DMX universes right out of the box



### Microphone & line in

- Sync FX with the music
- Analog audio peak detection circuit
- Built in microphone with auto-gain
- 3.5mm jack socket

### USB

- USB powered
- Sync with Ableton Link & OS2L via a computer
- Link with MIDI faders and sync with MIDI clock
- Backup projects and fixture to a memory stick

### 4 universes

- 2x 3pin and 2x 5pin XLR sockets
- Assign any universe to any XLR
- Sync with another Wolfmix
- Link with faders using DMX IN

### Flash buttons

Quick access buttons for performing with special effects.



### COLOR FX

Mix up to 16 colors into a Rainbow, Sparkle or Light Fever effect. Wolfmix will apply the effects to the light's color channels including: RGB, Amber, White, UV, or CMY. For light's without color mixing, the effects can be applied to a fixed color wheel.



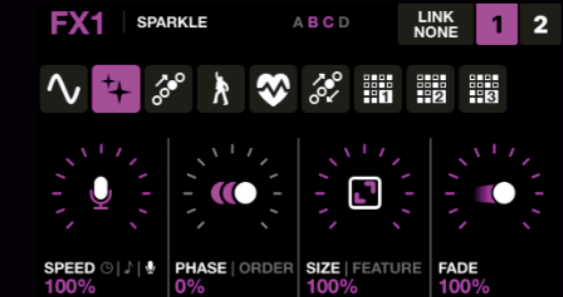
### MOVE FX

Create moving patterns on Scanners and Moving Heads. The Move FX module includes Pan, Tilt, Circle, and a sweeping Magic Carpet. Fan the light beams and move the center point of a pattern to play up to the sky or down below on the stage.



### BEAM FX

Chases, waves and heartbeat dimming effects can be created with the Beam FX module. Effects are applied to color channels, or for lights without color mixing- the dimmer or shutter channels. Create custom patterns with the Step Sequencer.



### 20000+ fixture profiles

Never be stuck without a profile. Backup fixture profiles created on the Wolfmix, or load any profile from the Nicolaudie SSL2 fixture library.

